

# Ave Maria

J.S. Bach / Charles Gounod  
(bearb. E. Jochmus)

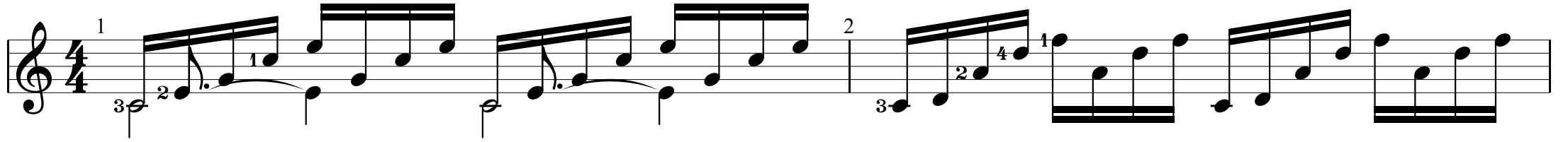
## Intro Gitarre

**C** Zweiten Basston halten...

**Dm/C**

let ring

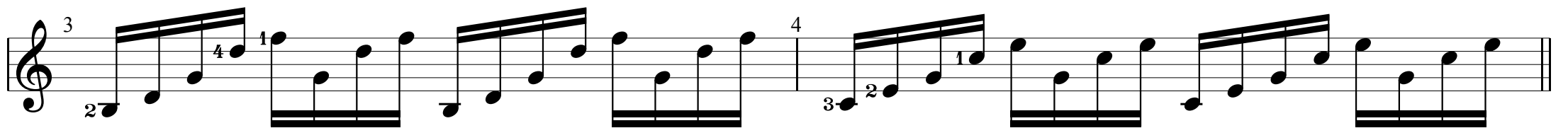
*p p i m a i m a*



**G7/H**

**C**

let ring

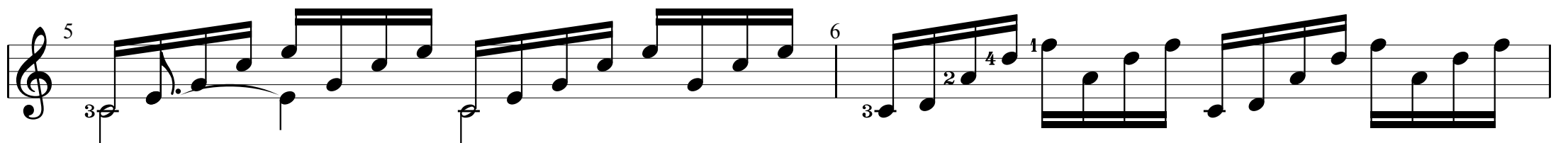


## Einsatz Geige

**C**

**Dm/C**

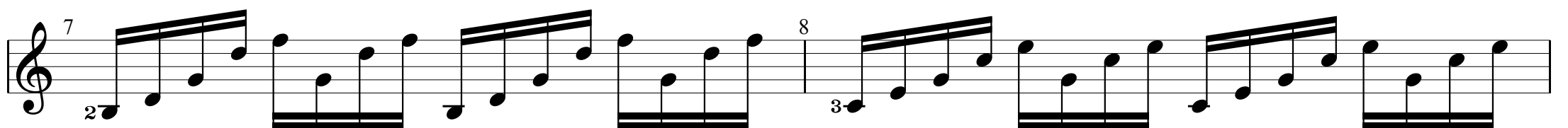
let ring



**G7/H**

**C**

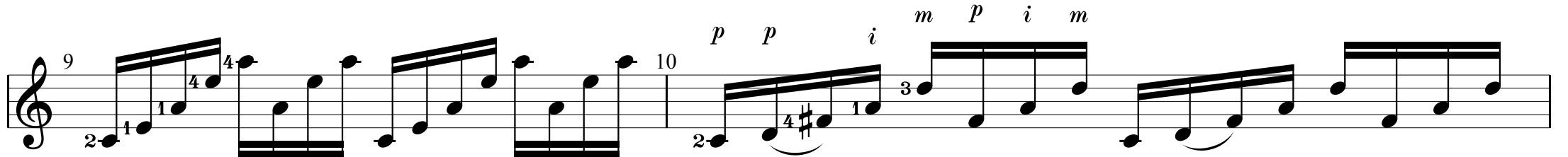
let ring



**Am/C**

**D7/C**

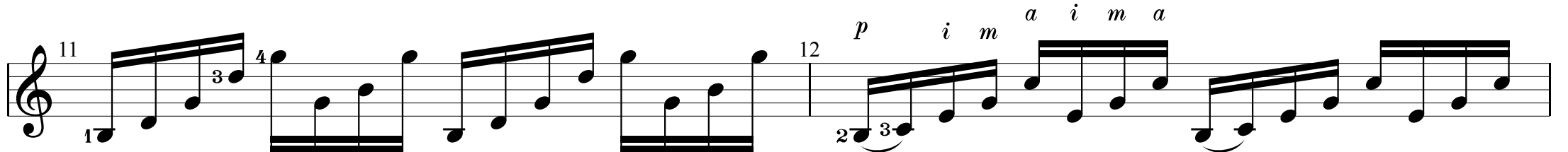
let ring



**G/H**

**C mit H Vorhalt**

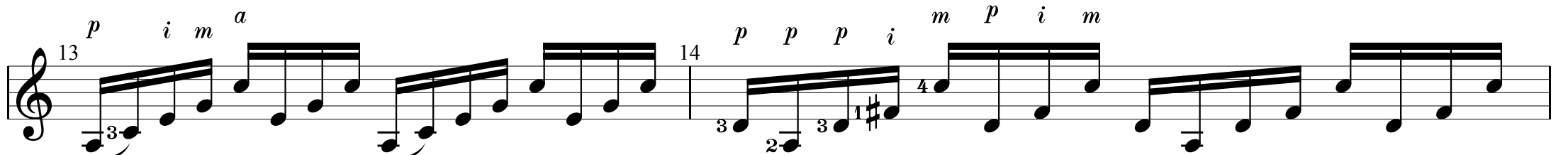
let ring



**Am7**

**D7**

let ring



**G** *G dim (vermindert) fes!*

*let ring* -----

*p p i m a*

15

*p p i m a*

16

*p p i m a*

**Dm/F** **F dim** **ces!** **eses!**

let ring . . .

*p p i m a* *p i m a i m a* *p i m a i m a*

17 18

**C/E** **F mit E Vorhalt**

let ring ----- 1

**Dm7** **G7**

let ring

*p i m a p p i*

21 22

[illegible]

**Fmaj7 (major7)** **F# dim** **es**

let ring -----

*p p i m* *a* *p p i* *p p i*

25 26

**G übermäßig (aug, augmented)** **G# dim & Vorhalt**

let ring - - - - -

*p i m a m a p i m a m a*

**G7** **G & Quart/Sext-Vorhalt = C/G**

*let ring*

*p p i m i m p p i m p p i m a*

29 30

**G7sus4 (Quartvorhalt)**  
*let ring*  
*p p i*

**G7**  
*p p i*

**Eb verm /G**  
*let ring*  
*p p i*

**G & Quart/Sext-Vorhalt = C/G**  
*p p i*

**G7sus4 (Quartvorhalt)**  
*let ring*

**G7**

**C7**  
 B III  
*let ring*  
*p p i m a*

**F/C**  
*p p p i m a*

**oder 3**  
*p i p p*

*let ring*  
*p i m i m i m i m p p p*

**C**  
*a m i p*